



Engaging Content  
Engaging People

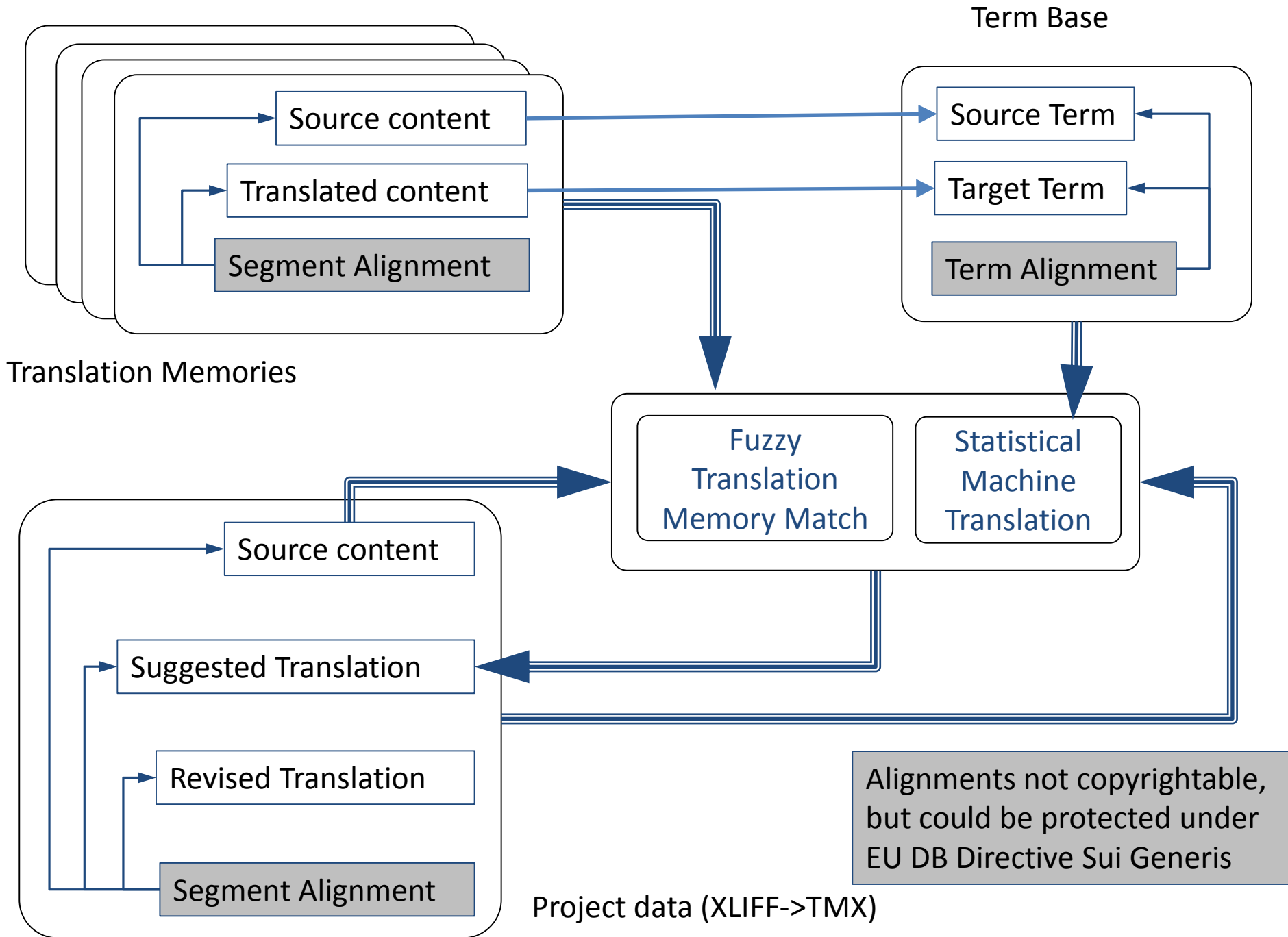


# TMX as Linked Data

David Lewis

ADAPT Centre, Trinity College Dublin





- Make Segments and their Translations ‘things’ that can be referenced via a URL (e.g. ITS2.0 standoff)
  - Can annotate with provenance meta-data, e.g. who created it, when
  - Can annotate with translation/postediting logs to record original input, suggested translation, segment editing time, quality assessments
- Make Alignments between source and target segments a dereferencable resource (TMX unit ID, but excluding content??)
- Can then annotate with permissions and obligations relevant to legal context (e.g. using W3C Open Digital Rights Language)
  - Identify source creator and commissioning party,
  - Copyright, creative effort and derivative work
  - Database Directive Sui Generis right – apply to segment alignments

